

Horton & Senate



71 Touchwood Hall Close, Solihull, B91 2UE

£1,250

- Top Floor Apartment
- Double Glazed
- Council Tax Band C
- Unfurnished
- 2 Double Bedrooms
- Lounge/Diner
- EPC Rating D
- Gas Central Heating
- Kitchen with Appliances
- Available Mid - Late June

71 Touchwood Hall Close, Solihull B91 2UE

Horton & Senate are pleased to offer this two double bedroom top floor apartment. Located within walking distance of Solihull Town Centre, Solihull Hospital and with M42 Motorway link nearby. Benefiting from double glazing, gas central heating and comprising of secure communal entrance with intercom system, communal staircase to all floors, entrance lobby, lounge/diner, refitted kitchen with integrated fridge/freezer, dishwasher, washing machine, electric oven and four ring gas hob, three piece white bathroom suite with shower over bath and both bedrooms with built in wardrobes. Available Mid -Late June

2

1

1

D

Council Tax Band: C



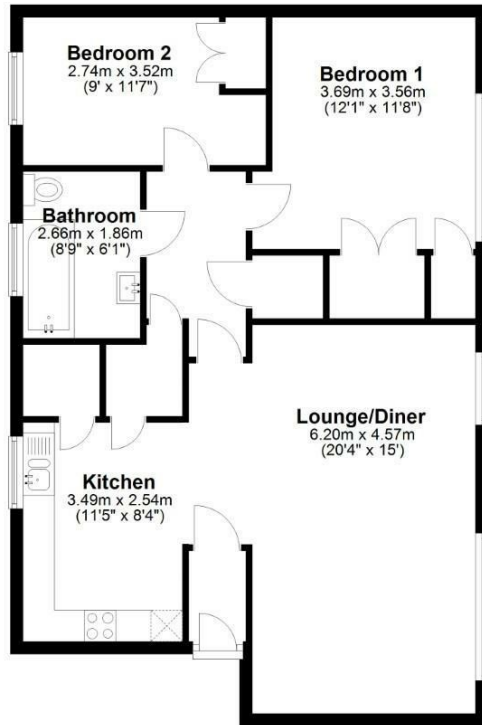






Floor Plan

Approx. 80.9 sq. metres (870.9 sq. feet)



Total area: approx. 80.9 sq. metres (870.9 sq. feet)



Directions

Viewings

Viewings by arrangement only. Call 01564 773200 to make an appointment.

Council Tax Band

C

Energy Efficiency Rating		Current	Potential
<i>Very energy efficient - lower running costs</i>			
(92 plus) A			
(81-91) B			
(69-80) C			78
(55-68) D		59	
(39-54) E			
(21-38) F			
(1-20) G			
<i>Not energy efficient - higher running costs</i>			
England & Wales		EU Directive 2002/91/EC	